



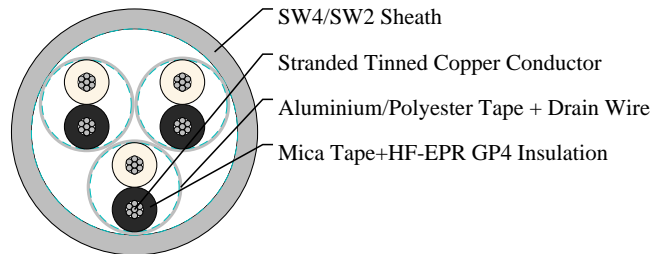
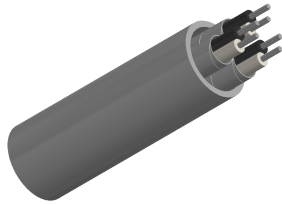
## Caledonian

BS 6883&BS 7917 Caledonian Offshore & Marine Cables Fire Resistant Instrumentation & Control Cables

[www.caledonian-cables.com](http://www.caledonian-cables.com)

[marketing@caledonian-cables.com](mailto:marketing@caledonian-cables.com)

150/250V HF-EPR Insulated, SW2/SW4 Sheathed, Individually Screened Unarmoured Fire Resistant Instrumentation & Control Cables 3P0.75



### APPLICATIONS

These fire resistant elastomeric insulated cables are designed for fixed wiring in ships and on mobile offshore units, suitable for use in instrumentation, lighting and control circuits where fire integrity is essential.

### STANDARDS

BS 7917

IEC 60331-31 Fire resistant

IEC 60332-3A Flame retardant

IEC 60754-1; IEC 60754-2 Corrosivity

IEC 61034-2 Smoke density

Cold bend and impact (-40°C) (on request)

CSA C22.2 No. 38-95 (on request)

### VOLTAGE RATING

150/250V

### CABLE CONSTRUCTION

Conductor: Tinned copper wire stranded circular cl. 2 BS 6360/IEC 60228.

Insulation: Mica tape + HF-EPR GP4 according to BS 7655 1.2.

Lay-up: Pairs, triples, quads.

Individual Screen: Aluminium/polyester tape + drain wire tinned copper.

Sheath: Halogen free thermosetting compound SW4 according to BS 7655 2.6 or reduced halogen thermosetting compound SW2 according to BS 7655 2.6.

### PHYSICAL AND THERMAL PROPERTIES

Temperature Range: -40°C ~ +90°C

### MECHANICAL PROPERTIES

Minimum Internal Bending Radius: 8×OD

### DIMENSION AND PARAMETERS



## Caledonian

BS 6883&BS 7917 Caledonian Offshore & Marine Cables Fire Resistant  
Instrumentation & Control Cables

[www.caledonian-cables.com](http://www.caledonian-cables.com)

[marketing@caledonian-cables.com](mailto:marketing@caledonian-cables.com)

| No. of Cores<br>× Cross-<br>sectional Area | Nominal<br>Insulation<br>Thickness | Nominal Sheath<br>Thickness | Overall<br>Diameter (min.) | Overall<br>Diameter (max.) | Approx. Weight |
|--|------------------------------------|-----------------------------|----------------------------|----------------------------|----------------|
| No.×mm <sup>2</sup>                        | mm                                 | mm                          | mm                         | mm                         | kg/km          |
| 3x2x0.75                                   | 0.8                                | 1.2                         | 14.0                       | 16.0                       | 227            |